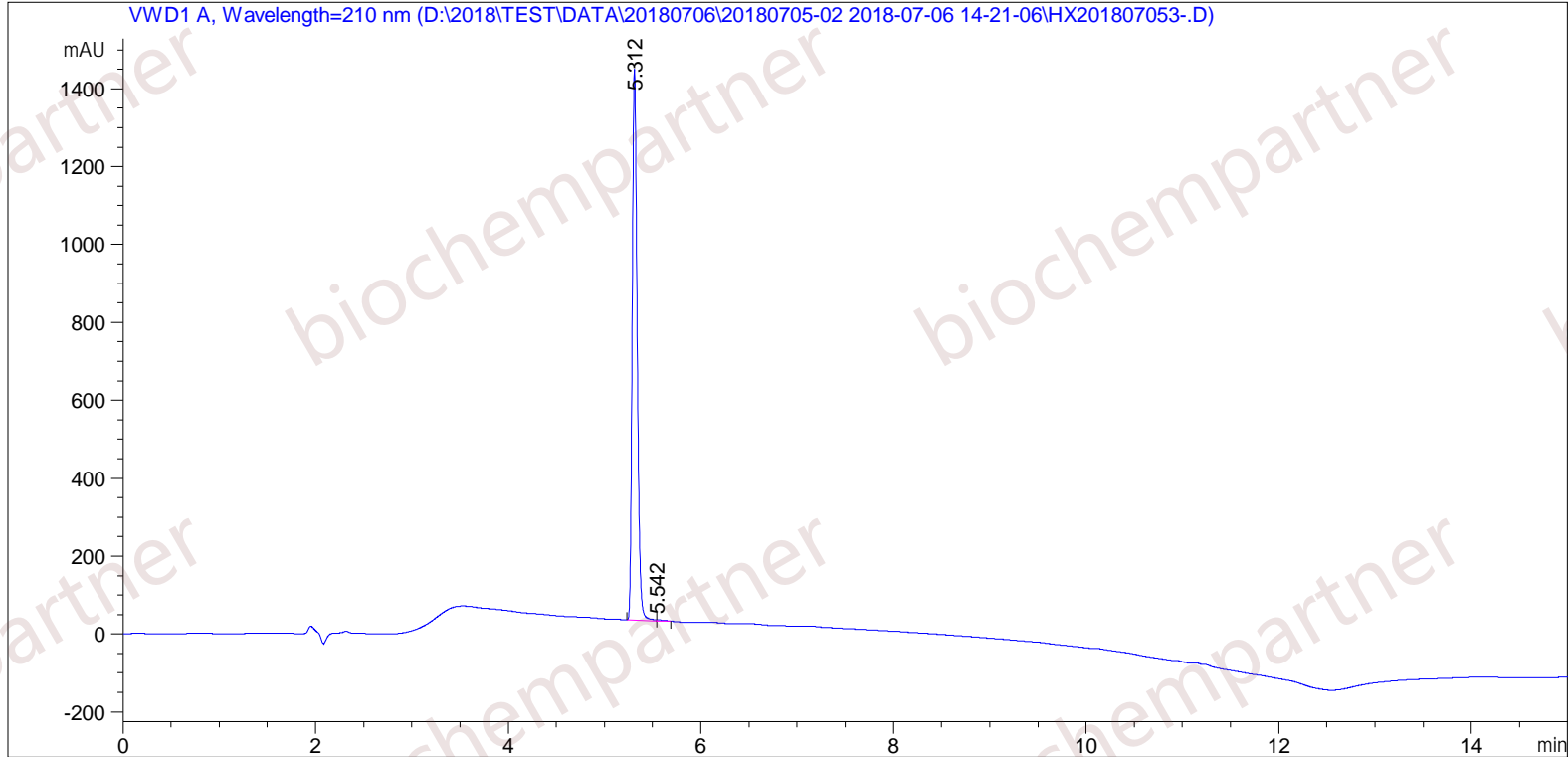


Sample Name: M-7-6-8

```

=====
Acq. Operator   : SYSTEM                               Seq. Line :    4
Acq. Instrument : Agilent HPLC                         Location  :   44
Injection Date  : 7/6/2018 3:31:23 PM                 Inj       :    1
                                                    Inj Volume: 5.000 µl
Different Inj Volume from Sample Entry! Actual Inj Volume : 0.400 µl
Acq. Method     : D:\2018\TEST\DATA\20180706\20180705-02 2018-07-06 14-21-06\5-(10)-100(5)-1-40-210.M
Last changed    : 7/6/2018 2:21:06 PM by SYSTEM
Analysis Method : D:\2018\TEST\DATA\20180706\20180705-02 2018-07-06 14-21-06\5-(10)-100(5)-1-40-210.M (Sequence Method)
Last changed    : 7/6/2018 4:22:08 PM by SYSTEM
                (modified after loading)
Additional Info : Peak(s) manually integrated
  
```



```

=====
                        Area Percent Report
=====
  
```

```

Sorted By      :      Signal
Multiplier     :      1.0000
Dilution      :      1.0000
Use Multiplier & Dilution Factor with ISTDs
  
```

Signal 1: VWD1 A, Wavelength=210 nm

Peak #	RetTime [min]	Type	Width [min]	Area [mAU*s]	Height [mAU]	Area %
1	5.312	MF	0.0602	5114.84766	1416.94543	99.7209
2	5.542	FM	0.0940	14.31563	2.53872	0.2791

Totals : 5129.16328 1419.48416

=====
*** End of Report ***