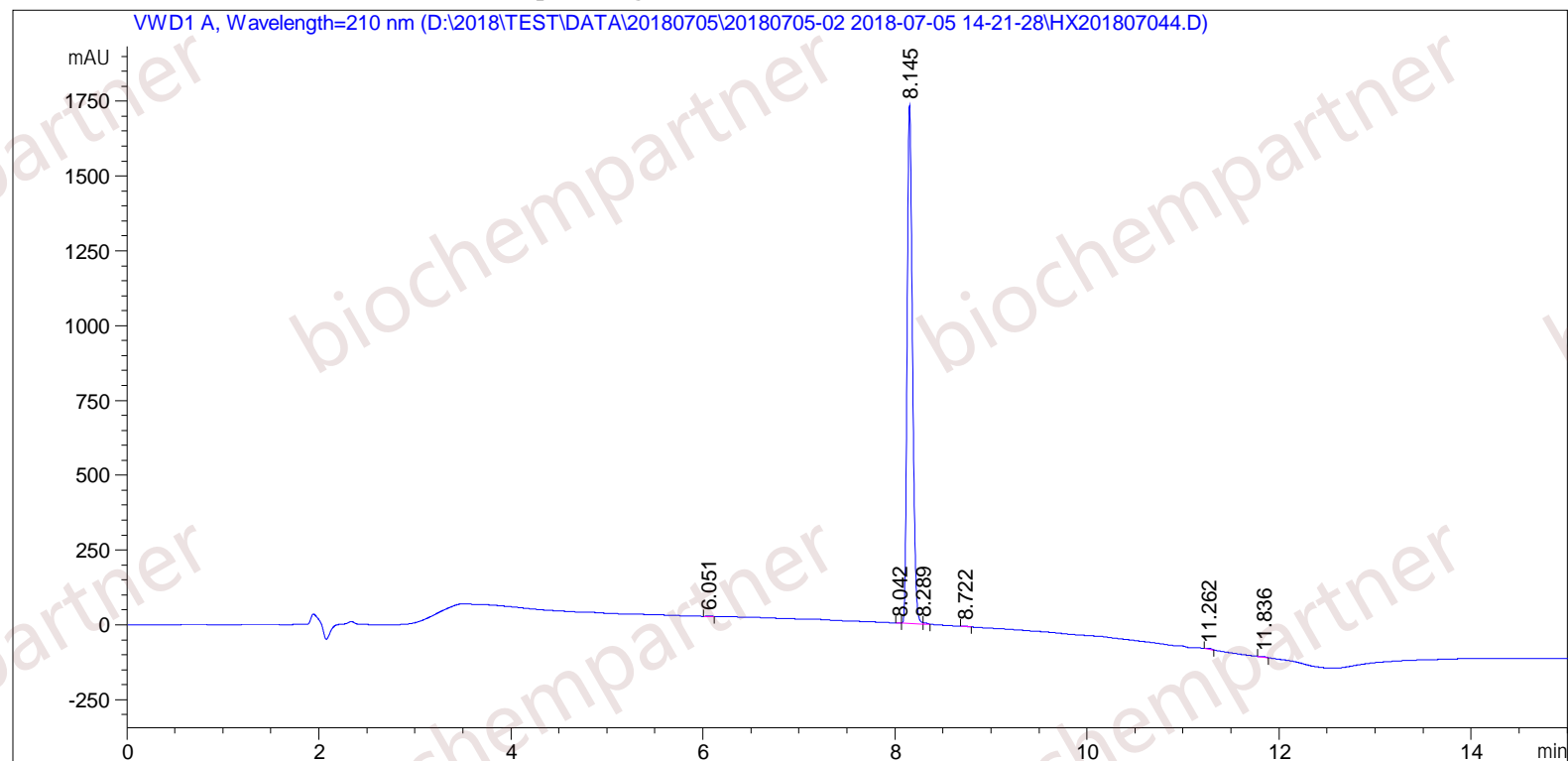


Sample Name: M-7-5-10

```
=====
Acq. Operator   : SYSTEM                      Seq. Line :    2
Acq. Instrument : Agilent HPLC                Location  :   42
Injection Date  : 7/5/2018 2:46:01 PM         Inj       :    1
                                           Inj Volume: 5.000 µl
Different Inj Volume from Sample Entry! Actual Inj Volume : 1.000 µl
Acq. Method     : D:\2018\TEST\DATA\20180705\20180705-02 2018-07-05 14-21-28\5-(10)-100(5)-1-40-210.M
Last changed    : 7/5/2018 2:21:28 PM by SYSTEM
Analysis Method : D:\2018\TEST\DATA\20180705\20180705-02 2018-07-05 14-21-28\5-(10)-100(5)-1-40-210.M (Sequence Method)
Last changed    : 7/5/2018 3:57:25 PM by SYSTEM
                 (modified after loading)
Additional Info  : Peak(s) manually integrated
=====
```



```
=====
                          Area Percent Report
=====
```

```
Sorted By           :      Signal
Multiplier           :      1.0000
Dilution             :      1.0000
Use Multiplier & Dilution Factor with ISTDs
```

Signal 1: VWD1 A, Wavelength=210 nm

Sample Name: M-7-5-10

Peak #	RetTime [min]	Type	Width [min]	Area [mAU*s]	Height [mAU]	Area %
1	6.051	MM	0.0557	5.12616	1.53507	0.0755
2	8.042	MF	0.0415	1.50916	6.05449e-1	0.0222
3	8.145	MF	0.0649	6752.22119	1733.81702	99.3979
4	8.289	FM	0.0397	9.72115	4.08541	0.1431
5	8.722	MM	0.0576	5.72910	1.65655	0.0843
6	11.262	MM	0.0646	13.54051	3.49410	0.1993
7	11.836	MM	0.0653	5.27275	1.34623	0.0776

Totals : 6793.12004 1746.53984

=====
*** End of Report ***