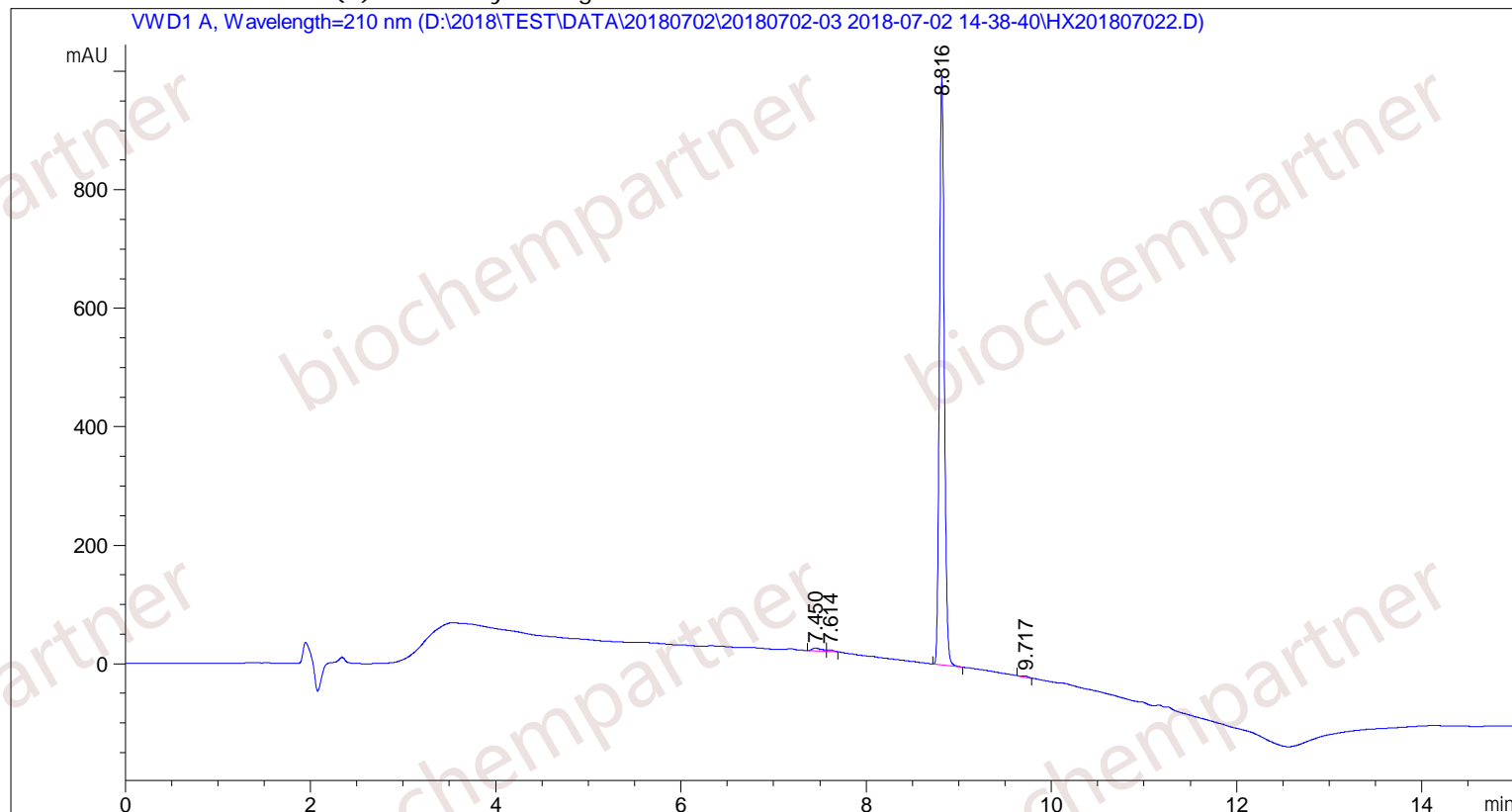


Sample Name: M-7-2-31

```

=====
Acq. Operator   : SYSTEM                               Seq. Line :    3
Acq. Instrument : Agilent HPLC                         Location  :   23
Injection Date  : 7/2/2018 3:27:31 PM                 Inj       :    1
                                                    Inj Volume: 5.000 µl
Different Inj Volume from Sample Entry! Actual Inj Volume : 1.000 µl
Acq. Method     : D:\2018\TEST\DATA\20180702\20180702-03 2018-07-02 14-38-40\5-(10)-100(5)-1-40-210.M
Last changed    : 7/2/2018 2:38:40 PM by SYSTEM
Analysis Method : D:\2018\TEST\DATA\20180702\20180702-03 2018-07-02 14-38-40\5-(10)-100(5)-1-40-210.M (Sequence Method)
Last changed    : 7/2/2018 4:14:02 PM by SYSTEM
Additional Info : Peak(s) manually integrated
    
```



=====
 Area Percent Report
 =====

```

Sorted By      :      Signal
Multiplier     :      1.0000
Dilution      :      1.0000
Use Multiplier & Dilution Factor with ISTDs
    
```

Signal 1: VWD1 A, Wavelength=210 nm

Peak #	RetTime [min]	Type	Width [min]	Area [mAU*s]	Height [mAU]	Area %
1	7.450	MF	0.1142	35.66578	5.20673	0.9431
2	7.614	FM	0.0829	12.78630	2.56950	0.3381
3	8.816	MM	0.0625	3721.97095	992.25043	98.4186
4	9.717	MM	0.0803	11.35447	2.35809	0.3002

Totals : 3781.77750 1002.38475

=====
*** End of Report ***