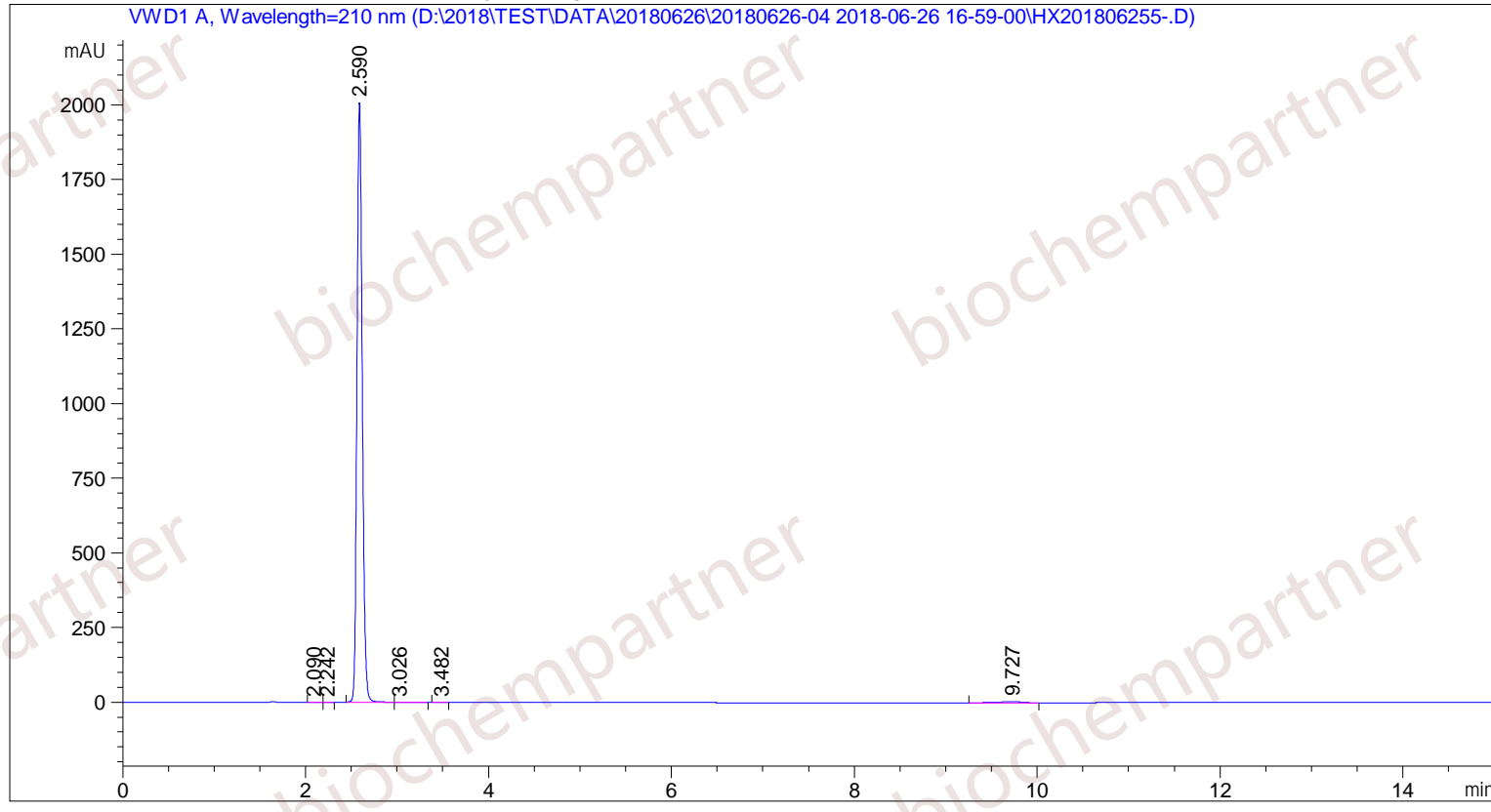


Sample Name: M-6-26-11

```

=====
Acq. Operator   : SYSTEM                               Seq. Line :    2
Acq. Instrument : Agilent HPLC                         Location  :   32
Injection Date  : 6/26/2018 5:26:33 PM                Inj       :    1
                                                    Inj Volume: 5.000 µl
Different Inj Volume from Sample Entry! Actual Inj Volume : 1.000 µl
Acq. Method     : D:\2018\TEST\DATA\20180626\20180626-04 2018-06-26 16-59-00\65(10)-100(0)-1-40-210.M
Last changed    : 6/26/2018 4:59:00 PM by SYSTEM
Analysis Method : D:\2018\TEST\DATA\20180626\20180626-04 2018-06-26 16-59-00\65(10)-100(0)-1-40-210.M (Sequence Method)
Last changed    : 6/26/2018 6:18:32 PM by SYSTEM
                (modified after loading)
Additional Info : Peak(s) manually integrated
    
```



Area Percent Report

```

Sorted By      : Signal
Multiplier     : 1.0000
Dilution       : 1.0000
Use Multiplier & Dilution Factor with ISTDs
    
```

Signal 1: VWD1 A, Wavelength=210 nm

| Peak # | RetTime [min] | Type | Width [min] | Area [mAU*s] | Height [mAU] | Area % |
|--------|---------------|------|-------------|--------------|--------------|---------|
| 1 | 2.090 | MF | 0.0866 | 2.41928 | 4.65637e-1 | 0.0299 |
| 2 | 2.242 | FM | 0.0690 | 1.25586 | 3.03545e-1 | 0.0155 |
| 3 | 2.590 | FM | 0.0666 | 8028.37256 | 2009.52722 | 99.0691 |
| 4 | 3.026 | FM | 0.1310 | 3.71481 | 4.72597e-1 | 0.0458 |

Sample Name: M-6-26-11

| Peak # | RetTime [min] | Type | Width [min] | Area [mAU*s] | Height [mAU] | Area % |
|--------|---------------|------|-------------|--------------|--------------|--------|
| 5 | 3.482 | MM | 0.0885 | 4.18499 | 7.88244e-1 | 0.0516 |
| 6 | 9.727 | BB | 0.2197 | 63.86681 | 4.16968 | 0.7881 |

Totals : 8103.81430 2015.72692

=====
*** End of Report ***