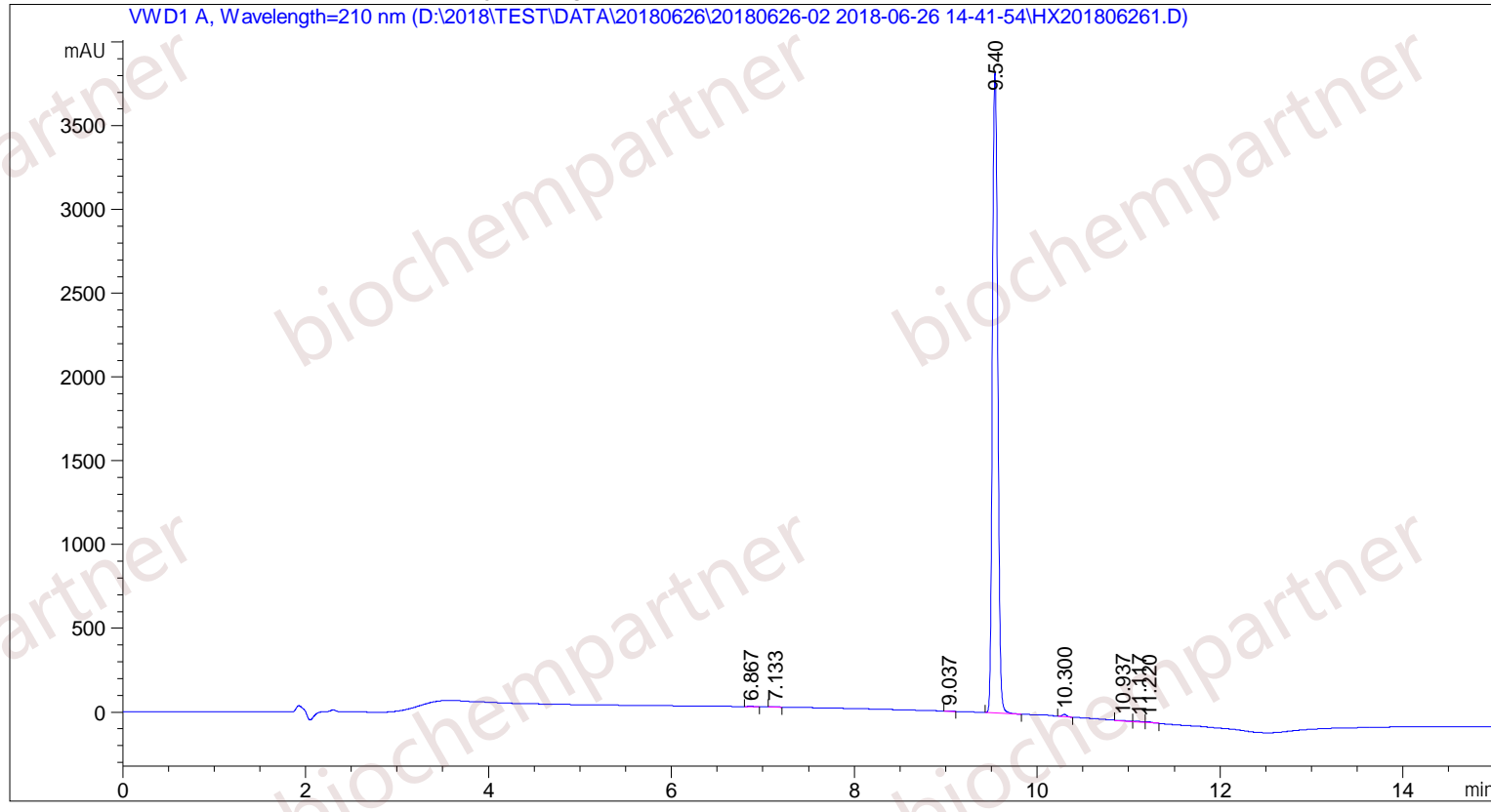


Sample Name: M-6-26-12

```

=====
Acq. Operator   : SYSTEM                               Seq. Line :    3
Acq. Instrument : Agilent HPLC                         Location  :   33
Injection Date  : 6/26/2018 3:27:50 PM                Inj       :    1
                                                    Inj Volume: 5.000 µl
Different Inj Volume from Sample Entry! Actual Inj Volume : 1.000 µl
Acq. Method     : D:\2018\TEST\DATA\20180626\20180626-02 2018-06-26 14-41-54\5-(10)-100(5)-1-40-210.M
Last changed    : 6/26/2018 2:41:54 PM by SYSTEM
Analysis Method : D:\2018\TEST\DATA\20180626\20180626-02 2018-06-26 14-41-54\5-(10)-100(5)-1-40-210.M (Sequence Method)
Last changed    : 6/26/2018 3:57:53 PM by SYSTEM
                (modified after loading)
Additional Info : Peak(s) manually integrated
    
```



Area Percent Report

```

Sorted By      :      Signal
Multiplier     :      1.0000
Dilution       :      1.0000
Use Multiplier & Dilution Factor with ISTDs
    
```

Signal 1: VWD1 A, Wavelength=210 nm

Peak #	RetTime [min]	Type	Width [min]	Area [mAU*s]	Height [mAU]	Area %
1	6.867	MM	0.0653	13.23870	3.37749	0.0845
2	7.133	MM	0.0854	6.88989	1.34405	0.0440
3	9.037	MM	0.0725	10.76595	2.47345	0.0687
4	9.540	MM	0.0677	1.55409e4	3824.17871	99.1493

Peak #	RetTime [min]	Type	Width [min]	Area [mAU*s]	Height [mAU]	Area %
5	10.300	MM	0.0610	50.57349	13.81836	0.3227
6	10.937	MF	0.1223	14.86689	2.02658	0.0948
7	11.117	FM	0.0963	19.60932	3.39394	0.1251
8	11.220	FM	0.0690	17.39276	4.19964	0.1110

Totals : 1.56742e4 3854.81222

=====  
\*\*\* End of Report \*\*\*