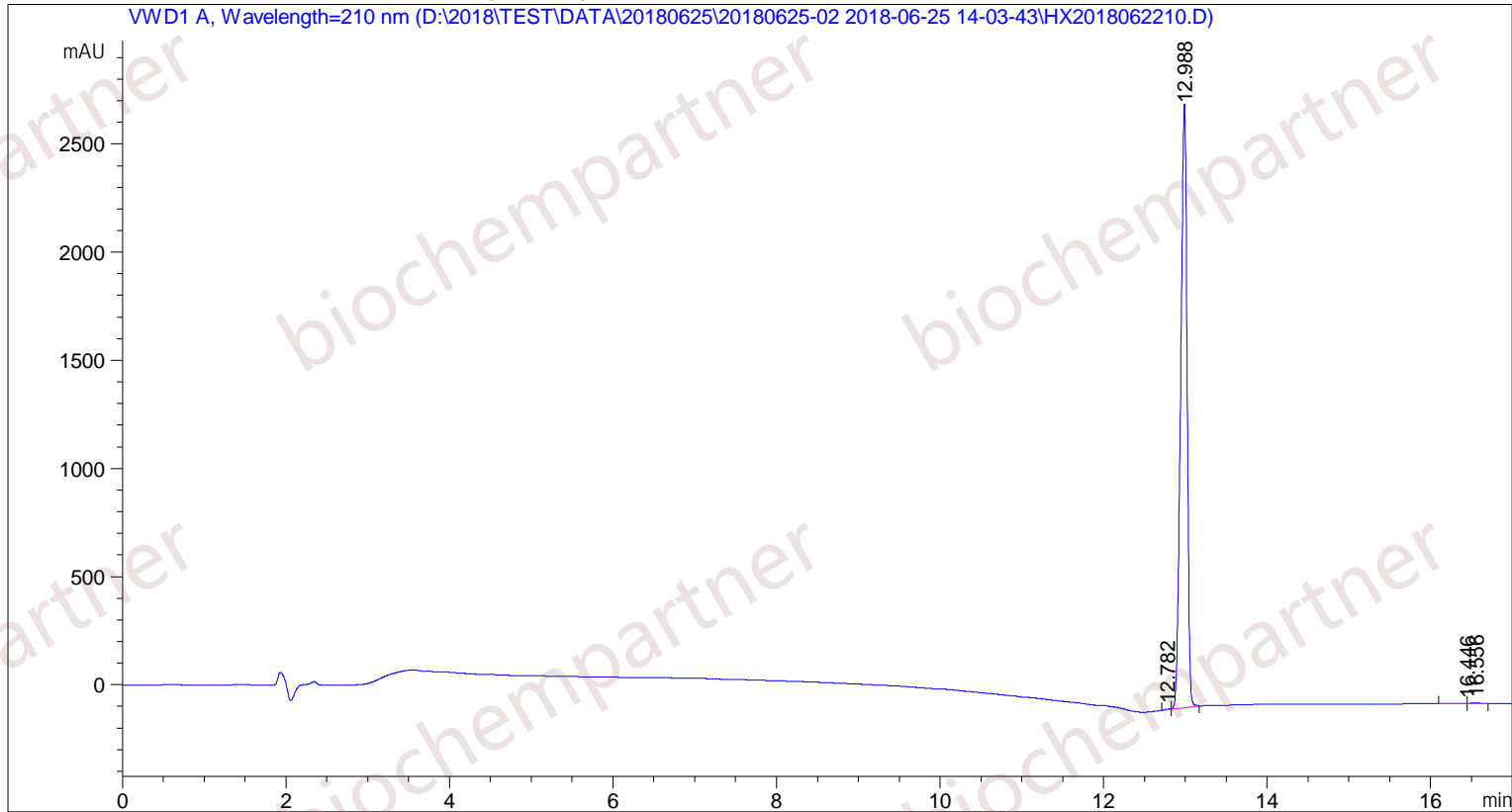


Sample Name: M-6-25-19

```

=====
Acq. Operator   : SYSTEM                               Seq. Line :    2
Acq. Instrument : Agilent HPLC                          Location  :   24
Injection Date  : 6/25/2018 2:28:20 PM                 Inj       :    1
                                                    Inj Volume: 5.000 µl
Different Inj Volume from Sample Entry! Actual Inj Volume : 2.000 µl
Acq. Method     : D:\2018\TEST\DATA\20180625\20180625-02 2018-06-25 14-03-43\5-(10)-100(5)-1-40-210.M
Last changed    : 6/25/2018 2:03:43 PM by SYSTEM
Analysis Method : D:\2018\TEST\DATA\20180625\20180625-02 2018-06-25 14-03-43\5-(10)-100(5)-1-40-210.M (Sequence Method)
Last changed    : 6/25/2018 3:01:01 PM by SYSTEM
                (modified after loading)
Additional Info : Peak(s) manually integrated
    
```



Area Percent Report

```

Sorted By      : Signal
Multiplier     : 1.0000
Dilution       : 1.0000
Use Multiplier & Dilution Factor with ISTDs
    
```

Signal 1: VWD1 A, Wavelength=210 nm

Peak #	RetTime [min]	Type	Width [min]	Area [mAU*s]	Height [mAU]	Area %
1	12.782	MF	0.0922	14.54319	2.62766	0.0955
2	12.988	FM	0.0905	1.51675e4	2793.27515	99.5778
3	16.446	MF	0.2265	22.53381	1.65784	0.1479
4	16.556	FM	0.1476	27.23342	3.07568	0.1788

Sample Name: M-6-25-19

Peak #	RetTime [min]	Type	Width [min]	Area [mAU*s]	Height [mAU]	Area %
Totals :				1.52318e4	2800.63633	

=====
*** End of Report ***