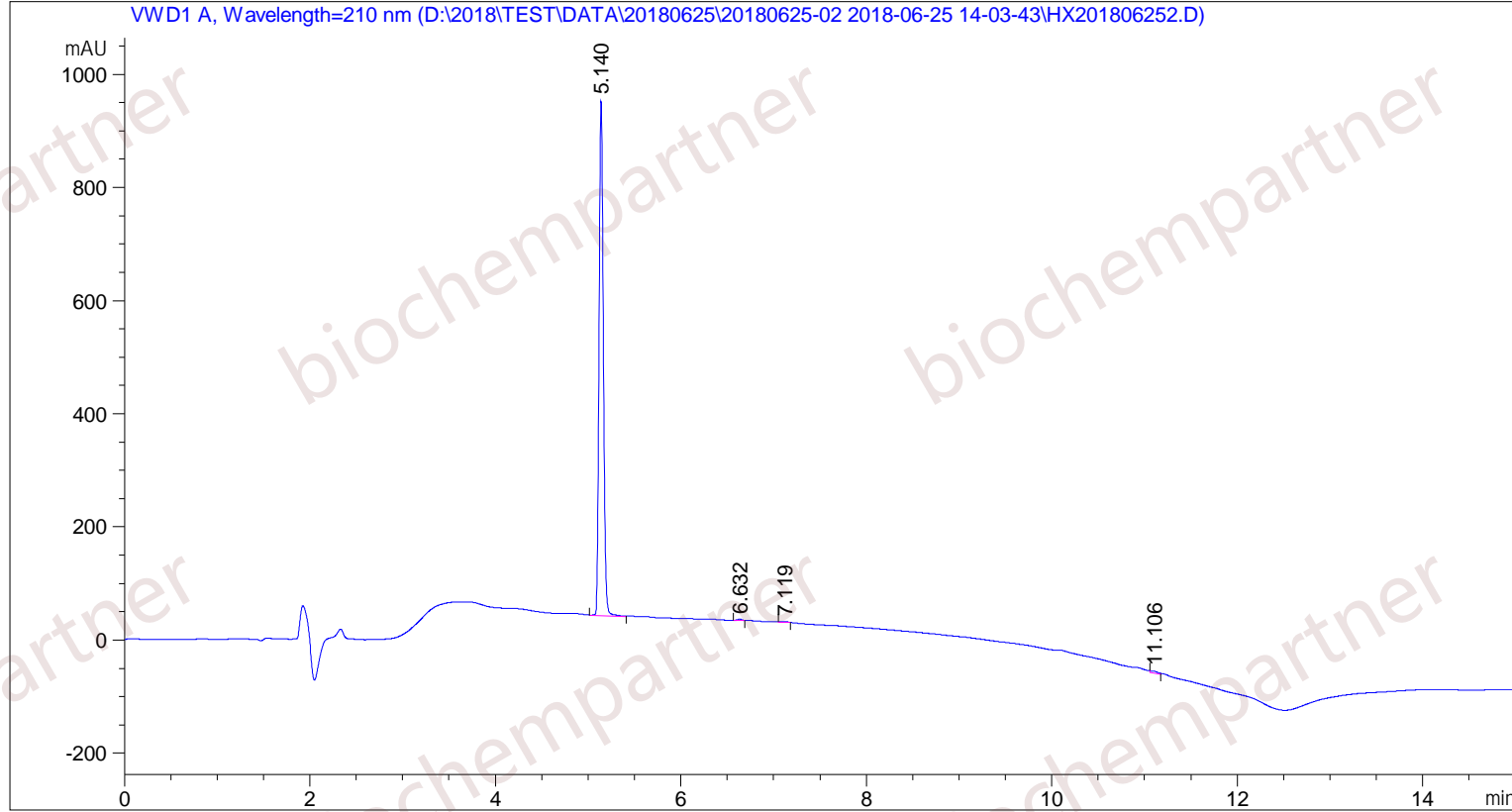


Sample Name: M-6-25-21

```

=====
Acq. Operator   : SYSTEM                               Seq. Line :    4
Acq. Instrument : Agilent HPLC                       Location  :   26
Injection Date  : 6/25/2018 3:11:02 PM                Inj       :    1
                                                    Inj Volume: 5.000 µl
Different Inj Volume from Sample Entry! Actual Inj Volume : 2.000 µl
Acq. Method     : D:\2018\TEST\DATA\20180625\20180625-02 2018-06-25 14-03-43\5-(10)-100(5)-1-40-210.M
Last changed    : 6/25/2018 2:03:43 PM by SYSTEM
Analysis Method : D:\2018\TEST\DATA\20180625\20180625-02 2018-06-25 14-03-43\5-(10)-100(5)-1-40-210.M (Sequence Method)
Last changed    : 6/25/2018 5:27:03 PM by SYSTEM
Additional Info : Peak(s) manually integrated
    
```



Area Percent Report

```

Sorted By      :      Signal
Multiplier     :      1.0000
Dilution       :      1.0000
Use Multiplier & Dilution Factor with ISTDs
    
```

Signal 1: VWD1 A, Wavelength=210 nm

Peak #	RetTime [min]	Type	Width [min]	Area [mAU*s]	Height [mAU]	Area %
1	5.140	MF	0.0525	2871.37671	911.98236	98.7807
2	6.632	MM	0.0650	9.58194	2.45516	0.3296
3	7.119	MM	0.0780	6.21241	1.32659	0.2137
4	11.106	FM	0.0961	19.64891	3.40639	0.6760

Totals : 2906.81997 919.17051

=====  
\*\*\* End of Report \*\*\*