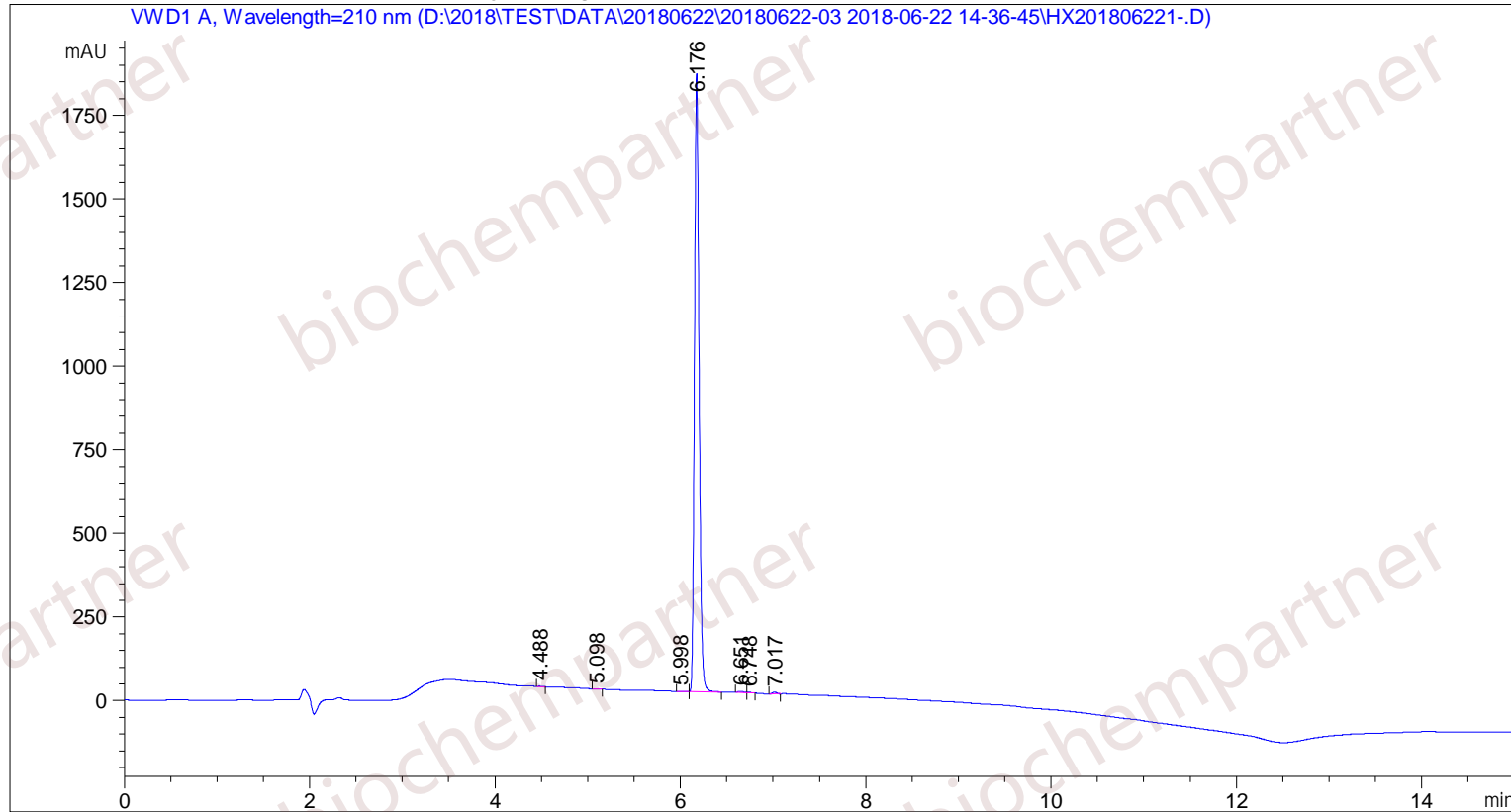


Sample Name: M-6-22-12

```

=====
Acq. Operator   : SYSTEM                               Seq. Line :    4
Acq. Instrument : Agilent HPLC                         Location  :   13
Injection Date  : 6/22/2018 3:43:58 PM                Inj       :    1
                                                    Inj Volume: 5.000 µl
Different Inj Volume from Sample Entry! Actual Inj Volume : 0.800 µl
Acq. Method     : D:\2018\TEST\DATA\20180622\20180622-03 2018-06-22 14-36-45\5-(10)-100(5)-1-40-210.M
Last changed    : 6/22/2018 2:36:45 PM by SYSTEM
Analysis Method : D:\2018\TEST\DATA\20180622\20180622-03 2018-06-22 14-36-45\5-(10)-100(5)-1-40-210.M (Sequence Method)
Last changed    : 6/22/2018 4:36:19 PM by SYSTEM
                (modified after loading)
Additional Info : Peak(s) manually integrated
    
```



Area Percent Report

```

Sorted By      :      Signal
Multiplier     :      1.0000
Dilution       :      1.0000
Use Multiplier & Dilution Factor with ISTDs
    
```

Signal 1: VWD1 A, Wavelength=210 nm

Peak #	RetTime [min]	Type	Width [min]	Area [mAU*s]	Height [mAU]	Area %
1	4.488	MM	0.0553	4.18113	1.26114	0.0630
2	5.098	MM	0.0653	2.77423	7.08140e-1	0.0418
3	5.998	MF	0.0809	3.63884	7.49580e-1	0.0549
4	6.176	FM	0.0592	6585.60791	1853.28137	99.2965

Peak #	RetTime [min]	Type	Width [min]	Area [mAU*s]	Height [mAU]	Area %
5	6.651	MF	0.0668	14.18355	3.53860	0.2139
6	6.748	FM	0.0635	5.27859	1.38598	0.0796
7	7.017	MM	0.0503	16.59938	5.49661	0.2503

Totals : 6632.26364 1866.42141

=====  
\*\*\* End of Report \*\*\*