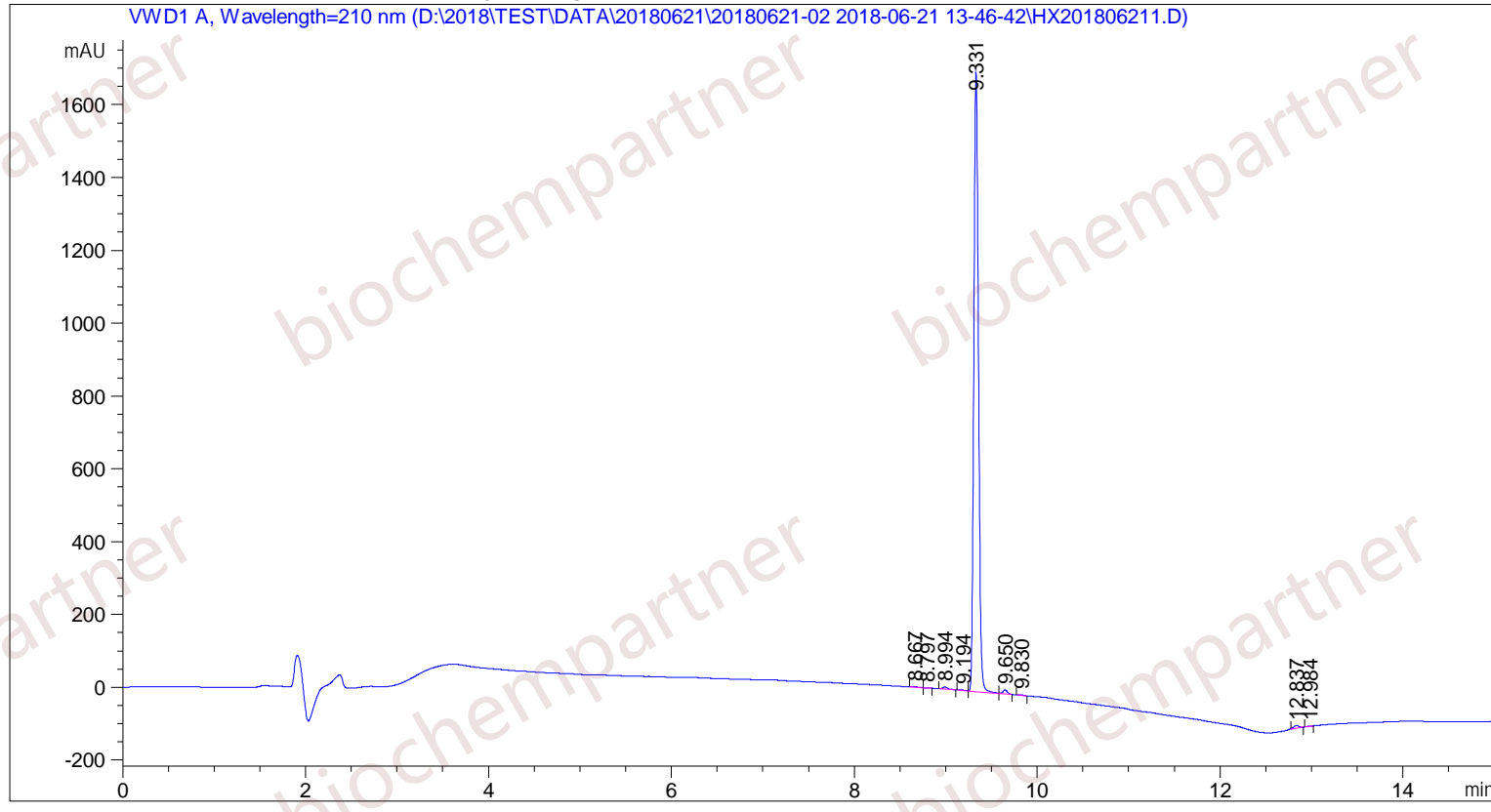


Sample Name: M-6-21-13

```

=====
Acq. Operator   : SYSTEM                      Seq. Line :    2
Acq. Instrument : Agilent HPLC                 Location  :    7
Injection Date  : 6/21/2018 2:14:19 PM        Inj       :    1
                                           Inj Volume: 5.000 µl
Different Inj Volume from Sample Entry! Actual Inj Volume : 3.000 µl
Acq. Method     : D:\2018\TEST\DATA\20180621\20180621-02 2018-06-21 13-46-42\5-(10)-100(5)-1-40-210.M
Last changed    : 6/21/2018 1:46:42 PM by SYSTEM
Analysis Method : D:\2018\TEST\DATA\20180621\20180621-02 2018-06-21 13-46-42\5-(10)-100(5)-1-40-210.M (Sequence Method)
Last changed    : 6/21/2018 3:29:28 PM by SYSTEM
                 (modified after loading)
Additional Info : Peak(s) manually integrated
    
```



Area Percent Report

```

Sorted By      : Signal
Multiplier     : 1.0000
Dilution       : 1.0000
Use Multiplier & Dilution Factor with ISTDs
    
```

Signal 1: VWD1 A, Wavelength=210 nm

Peak #	RetTime [min]	Type	Width [min]	Area [mAU*s]	Height [mAU]	Area %
1	8.667	MF	0.0868	6.37596	1.22497	0.1057
2	8.797	FM	0.0631	2.77653	7.33568e-1	0.0460
3	8.994	MM	0.0617	22.72044	6.13856	0.3765
4	9.194	MF	0.0738	5.72562	1.29373	0.0949

Sample Name: M-6-21-13

Peak #	RetTime [min]	Type	Width [min]	Area [mAU*s]	Height [mAU]	Area %
5	9.331	FM	0.0579	5916.61035	1703.36804	98.0570
6	9.650	FM	0.0563	38.14347	11.29817	0.6322
7	9.830	MM	0.0574	4.71636	1.37042	0.0782
8	12.837	MM	0.0699	33.76113	8.04697	0.5595
9	12.984	MM	0.0546	3.01675	9.20644e-1	0.0500

Totals : 6033.84661 1734.39507

=====
*** End of Report ***