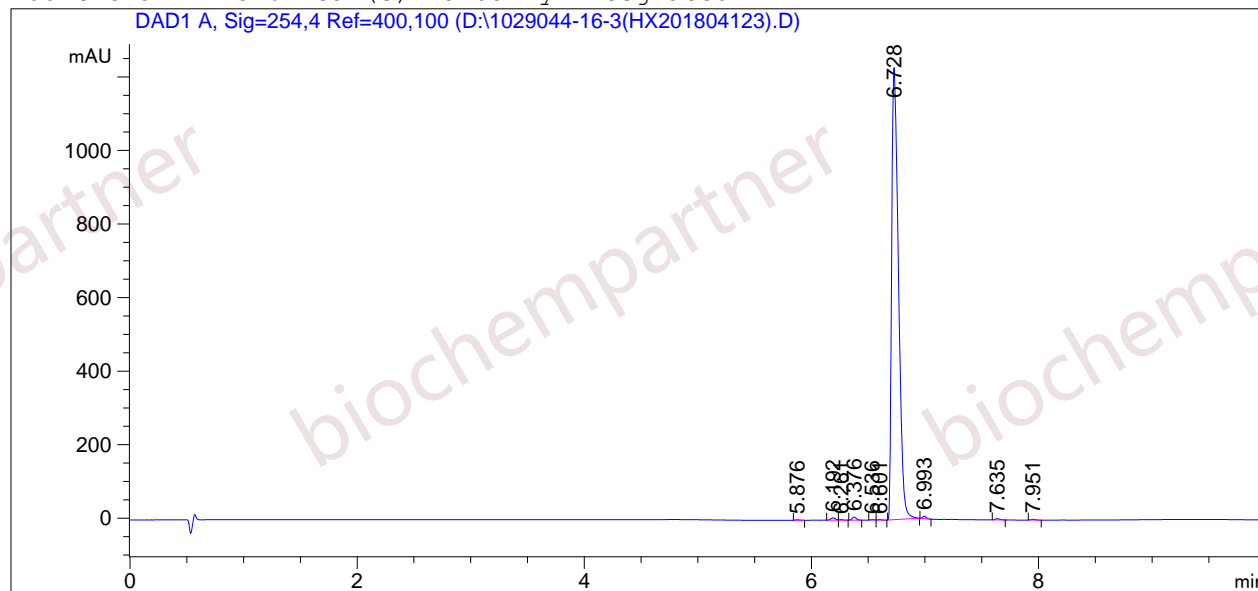


=====
Acq. Operator : Seq. Line : 2
Acq. Instrument : Instrument 1 Location : Vial 5
Injection Date : 4/16/2018 2:25:46 PM Inj : 1
Inj Volume : 3.0 µl
Acq. Method : D:
Last changed : 3/24/2017 8:58:09 AM by 1
Analysis Method : D:\CHEM32\1\1.M
Last changed : 4/16/2018 2:53:32 PM
(modified after loading)
Sample Info : [A = ACN, B = 0.1% H3PO4/H2O] 0% A/B 2 min, 0-95% A/B 5 min, 95% A/B 3 min;
Athena C18 (3 µm, 2.1 mm * 100 mm); Flow: 0.45 ml/min, T = 25

Additional Info : Peak(s) manually integrated



=====
Area Percent Report
=====

Sorted By : Signal
Multiplier : 1.0000
Dilution : 1.0000
Use Multiplier & Dilution Factor with ISTDs

Signal 1: DAD1 A, Sig=254,4 Ref=400,100

Peak #	RetTime [min]	Type	Width [min]	Area [mAU*s]	Height [mAU]	Area %
1	5.876	BB	0.0381	3.48845	1.37462	0.0672
2	6.192	BV	0.0440	18.08729	6.29291	0.3484
3	6.261	VB	0.0332	3.34510	1.35756	0.0644
4	6.376	BB	0.0386	20.51412	8.21289	0.3951
5	6.536	BV	0.0317	3.02427	1.43036	0.0583
6	6.601	VB	0.0341	2.77782	1.11461	0.0535
7	6.728	BB	0.0640	5110.76758	1229.10657	98.4417
8	6.993	BB	0.0350	14.43948	6.47609	0.2781
9	7.635	BB	0.0419	9.57790	3.34467	0.1845
10	7.951	BB	0.0383	5.64966	1.94907	0.1088

Totals : 5191.67167 1260.65935

=====
*** End of Report ***