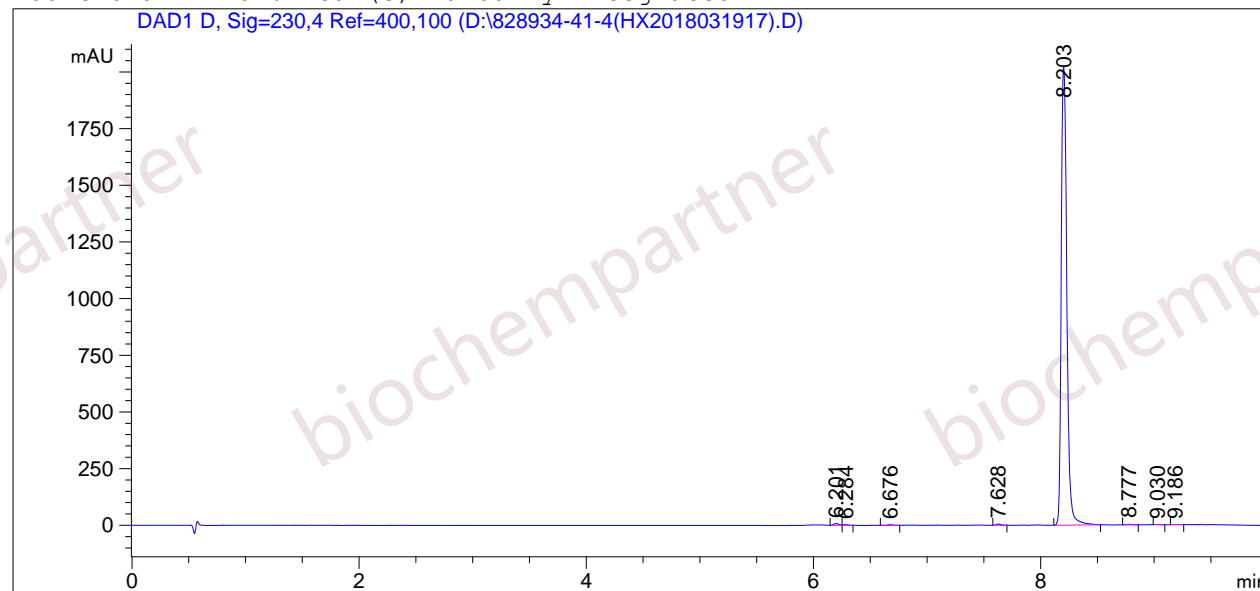


=====
Acq. Operator : Seq. Line : 1
Acq. Instrument : Instrument 1 Location : Vial 1
Injection Date : 3/20/2018 1:16:11 PM Inj : 1
Inj Volume : 3.0 µl
Acq. Method : D:
Last changed : 3/24/2017 8:58:09 AM by 1
Analysis Method : D:\CHEM32\1\1.M
Last changed : 3/20/2018 2:23:56 PM
(modified after loading)
Sample Info : A = ACN, B = 0.1% H3PO4/H2O] 0% A/B 2 min, 0-95% A/B 5 min, 95% A/B 3 min;
Athena C18 (3 µm, 2.1 mm * 100 mm); Flow: 0.45 ml/min, T = 25

Additional Info : Peak(s) manually integrated



=====
Area Percent Report
=====

Sorted By : Signal
Multiplier : 1.0000
Dilution : 1.0000
Use Multiplier & Dilution Factor with ISTDs

Signal 1: DAD1 D, Sig=230,4 Ref=400,100

Peak #	RetTime [min]	Type	Width [min]	Area [mAU*s]	Height [mAU]	Area %
1	6.201	BV	0.0437	21.15176	7.55766	0.3026
2	6.284	VB	0.0386	7.18833	2.65003	0.1028
3	6.676	BB	0.0405	8.29783	2.97618	0.1187
4	7.628	BB	0.0404	14.60732	5.43363	0.2090
5	8.203	BB	0.0535	6924.91504	2018.29858	99.0784
6	8.777	BB	0.0443	7.32951	2.35471	0.1049
7	9.030	BB	0.0354	2.69341	1.04960	0.0385
8	9.186	BB	0.0404	3.14772	1.03805	0.0450

Totals : 6989.33091 2041.35845

=====
***End of Report ***