

Sample Name: myc-0301-a2

Easy-Access Method: 'STD-5MIN-POS(COLUMN-2-APCI)'

mol wt 2:

mol wt3:

=====
Acq. Operator : System Administrator
Acq. Instrument : INSTRUMENT 1 Location : P1-E-01
Injection Date : 3/1/2018 3:33:16 PM

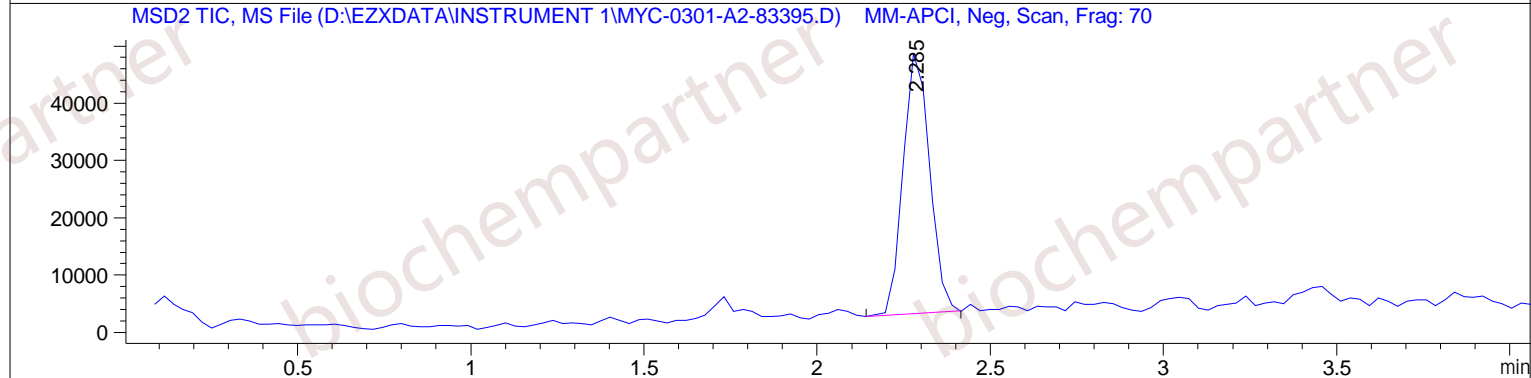
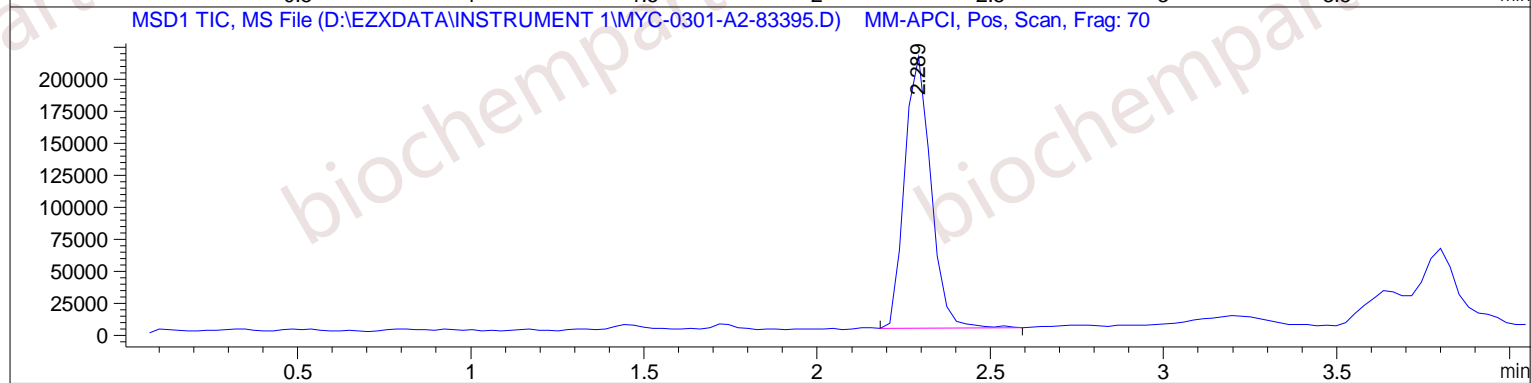
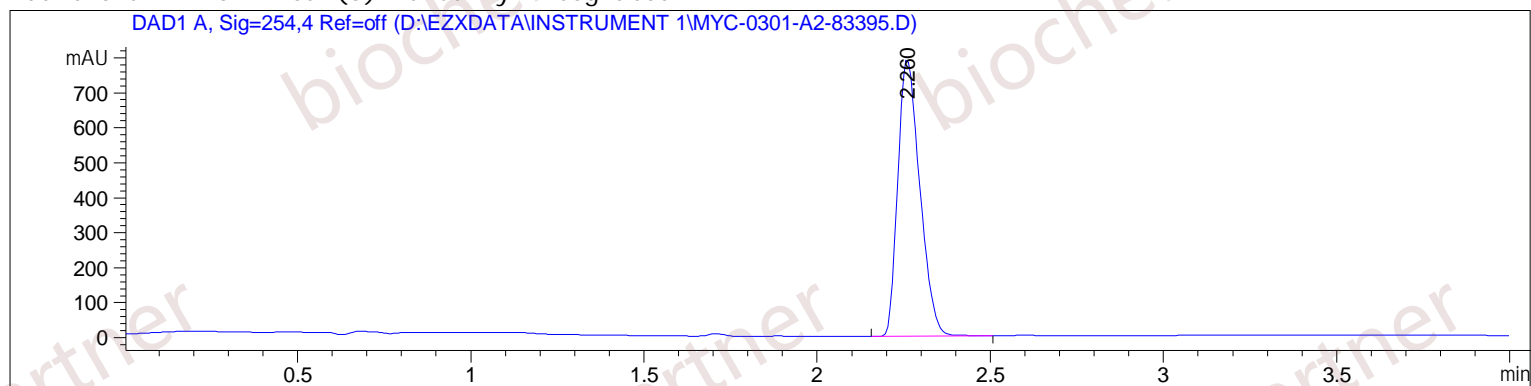
Inj Volume : 1.000 µl
Acq. Method : C:\CHEM32\1\METHODS\STD-5MIN-POS(COLUMN-2-APCI).M
Last changed : 3/1/2018 3:32:42 PM by System Administrator
(modified after loading)

Analysis Method : C:\CHEM32\1\METHODS\STD-5MIN-POS(COLUMN-2).M
Last changed : 1/29/2018 3:27:34 PM by System Administrator
(modified after loading)

Method Info : text samples

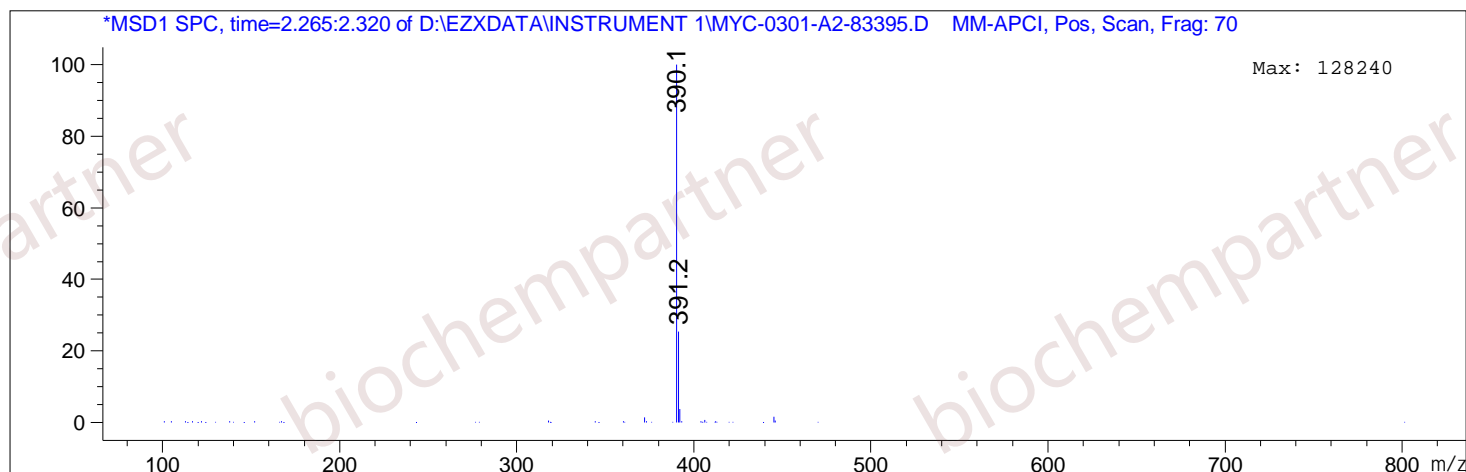
Sample Info : Easy-Access Method: 'STD-5MIN-POS(COLUMN-2-APCI)'
mol wt 2:
mol wt3:

Additional Info : Peak(s) manually integrated



MS Signal: MSD1 TIC, MS File, MM-APCI, Pos, Scan, Frag: 70
Spectra averaged over upper half of peaks.
Noise Cutoff: 1000 counts.
Reportable Ion Abundance: > 10%.

Retention Time (MS)	MS Area	Mol. Weight or Ion
2.289	1111196	391.20 I 390.15 I



MS Signal: MSD2 TIC, MS File, MM-APCI, Neg, Scan, Frag: 70
Spectra averaged over upper half of peaks.
Noise Cutoff: 1000 counts.
Reportable Ion Abundance: > 10%.

Retention Time (MS)	MS Area	Mol. Weight or Ion
2.285	243454	389.20 I 388.15 I

